



5 Key Uses for MigrationWiz Advanced Options

BitTitan Expert



Antonio Vargas
Sr. Technical Sales Specialist

Today's Agenda

- About BitTitan
- Project Sharing for Migration Collaboration
- Folder and Recipient Mapping
- Impersonation and Delegation
- Date Range and Folder Filtering
- PowerShell SDK
- Next Steps

About BitTitan

- Founded in 2007
- 160+ employees worldwide
- 155+ countries served
- 31,000+ customers
- 6.5M+ customer employees serviced

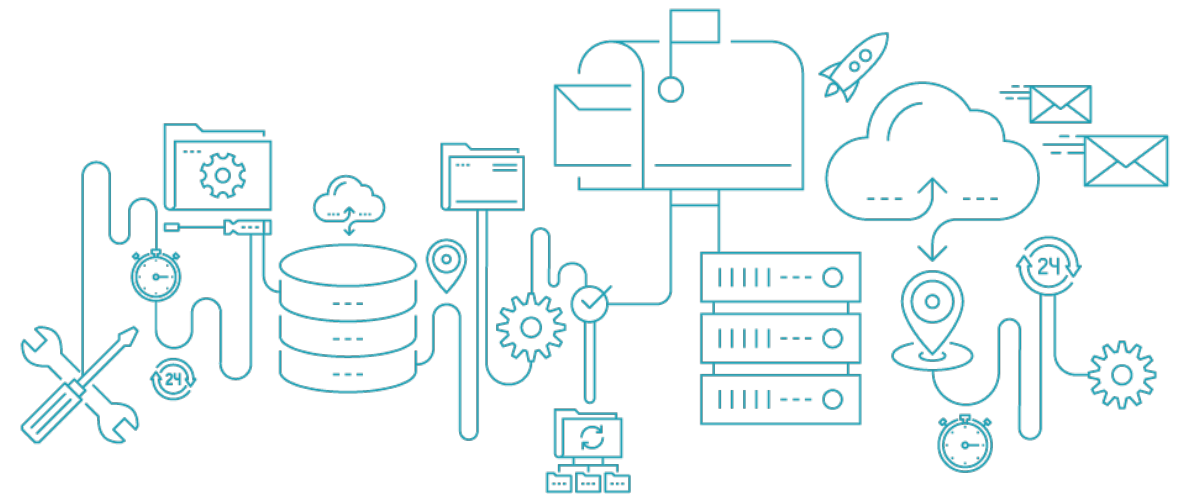


About BitTitan

MIGRATE MULTIPLE WORKLOADS WITH MIGRATIONWIZ

MigrationWiz is the industry-leading, 100% cloud-based migration software that helps you get email and data from nearly any Source to any Destination.

- Easy to use
- Well supported
- Secure
- Automatically scales
- Server-less Install (SaaS)
- Proven technology



Project Sharing for Migration Collaboration

BITTITAN MSPCOMPLETE WORKGROUPS

- Leverage Workgroups to collaborate with your customers and team members
 - Each BitTitan user has a default workgroup
 - You can create additional workgroups to share projects with your team or your customers
 - Invite users to your new workgroup (all they need is a BitTitan account) and give them an MSPComplete level role
 - Browse between workgroups in MigrationWiz

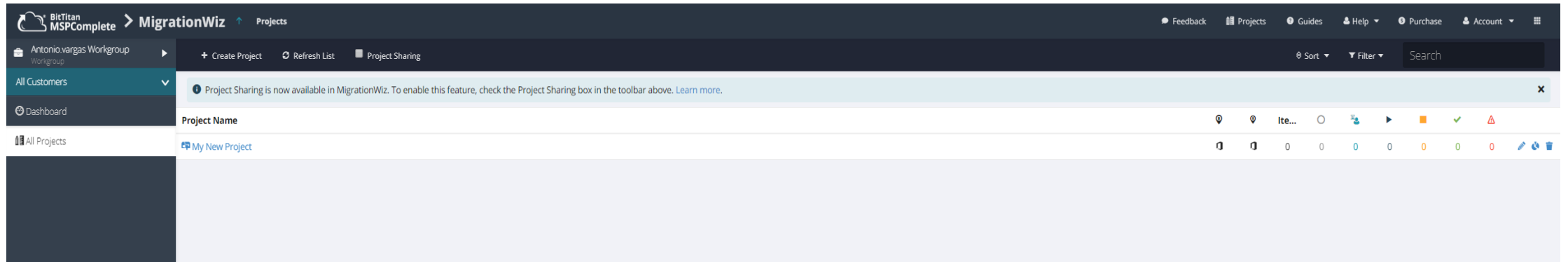
The screenshot displays the BitTitan MSPComplete interface. On the left is a navigation sidebar with options: Antonio.vargas Workgroup (selected), Activity Center, Library, My Tasks, Personal Feed, Reports, Customers, People, and Settings. The main content area is titled 'People' and shows a list of agents. At the top right of the main area are buttons for 'Add', 'Feedback', 'Guides', 'Help', 'Purchase', and a user profile for 'Antonio Maria de Vargas'. Below the 'People' header, there are tabs for 'Agents', 'Teams', and 'Invited'. The 'Agents' tab is active, showing '1 Agents'. A table lists the agents with columns for 'Email Address', 'Name', and 'Role'. One agent is listed: Antonio.vargas@ with the name 'Antonio Maria de Vargas' and the role 'Administrator'. There are checkboxes for each agent and an 'Invite Agents' button at the top right of the table.

Email Address	Name	Role
<input type="checkbox"/> Antonio.vargas@	Antonio Maria de Vargas	Administrator

Project Sharing for Migration Collaboration

MIGRATIONWIZ COLLABORATION

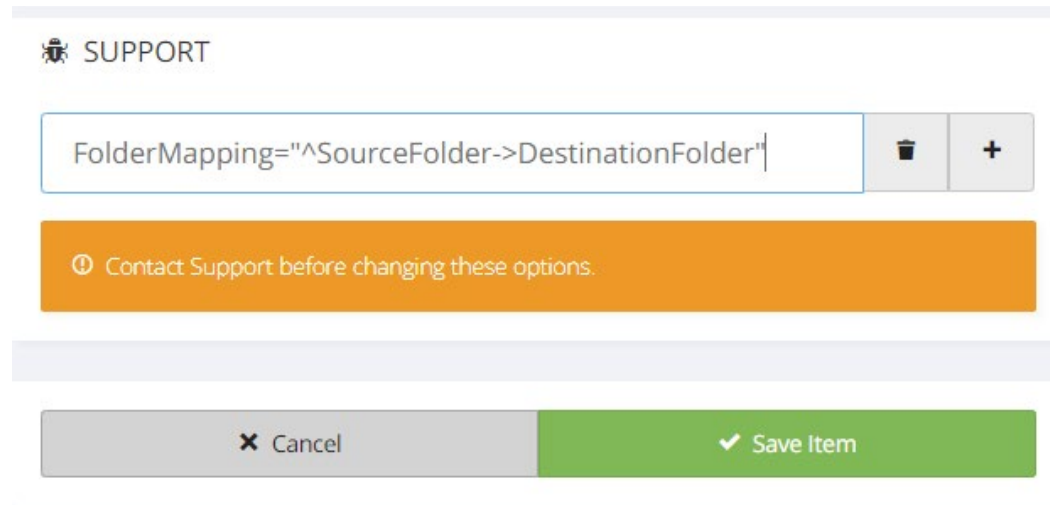
- Collaborate in MigrationWiz, creating and managing projects, with all the members in your Workgroup
 - All users will have the same level of access within MigrationWiz
 - Managing MigrationWiz projects does not require the use of a shared account anymore
 - Have different resources in your team— perform different tasks, based on complexity



Folder and Recipient Mapping

FOLDER MAPPING – HOW TO CONFIGURE

- Folder mapping is an advanced option that can be configured both at the MigrationWiz project or line item level
- You can add one or multiple folder mappings, under support options
- We have a [KB article](#) dedicated to folder mapping with some great examples



The screenshot displays a configuration window for folder mapping. At the top, there is a header with a bug icon and the text "SUPPORT". Below this is a text input field containing the configuration string "FolderMapping="^SourceFolder->DestinationFolder" followed by a cursor. To the right of the input field are two buttons: a trash can icon for deletion and a plus sign for adding a new mapping. Below the input field is a prominent orange warning banner with a circular icon and the text "Contact Support before changing these options.". At the bottom of the window, there are two buttons: a grey "Cancel" button with an 'x' icon and a green "Save Item" button with a checkmark icon.

Folder and Recipient Mapping

FOLDER MAPPING – EXAMPLES

- Examples where folder mapping can be very useful:
 - Migrate an entire Public Folder Organization, and its folder structure, into a top-level folder of an existing one – very useful for mergers or acquisitions
 - PST migrations into a specific folder of the end user inbox
 - Google resources migrations – mandatory for this type of migration, as it ensures that the source calendar (Google resource) gets migrated into the root calendar of the resource mailbox in the destination
 - Collapse a folder structure into a single folder at the destination – mailboxes to Office 365 groups is a good example
 - Consolidate multiple source mailboxes into one destination mailbox by migrating them into different top-level mailbox folders

Folder and Recipient Mapping

RECIPIENT MAPPING – HOW TO CONFIGURE

- Recipient mapping is an advanced option that can be configured both at the MigrationWiz project or line item level, but in most the cases you should apply recipient mapping at the project level
- You can add one or multiple recipient mappings, under support options
- Recipient Mapping is regex based and the most common ones to be applied would be per domain or per user
- We have a [KB article](#) dedicated to recipient mapping and with some great examples
- Translating addresses in emails vs calendar items

Note: Recipient mapping is not supported in all scenarios, so please check the KB article referenced above to check if your scenario is.

Folder and Recipient Mapping

RECIPIENT MAPPING – EXAMPLES

- Per domain recipient mapping: [RecipientMapping="@Sourcedomain.com->@Destinationdomain.com"](#)
- Per user recipient mapping: [RecipientMapping="JohnDoe@abc.com->@JohnD@xyz.com"](#)
- Practical examples where recipient mapping will help:
 - T2T migrations – to make sure the source onmicrosoft.com domain gets removed from all items
 - Any migration that includes changing the email domain (i.e divestitures)
 - Google resources migrations – mandatory for this type of migrations, as it ensures that the resource gets its address translated

Impersonation and Delegation

THE DIFFERENCE BETWEEN THE TWO ADMIN AUTHENTICATION METHODS

- Impersonation and Delegation are two Exchange based admin authentication methods, that MigrationWiz leverages to access source and destination Exchange mailboxes
- You can use the MigrationWiz project advanced options, to choose if you want to use delegation or impersonation. You do so by selecting or unselecting the "Use Impersonation to authenticate" checkbox
- When the source or destination is Exchange Online, the use impersonation checkbox will be selected by default
- It's highly recommended that you use impersonation for the environments in which you can't create a throttling policy, and delegation on those you can

Date Range and Folder Filtering

HOW TO CONFIGURE AND EXAMPLES

- Date range filtering is an advanced option that can be configured at the MigrationWiz project level, under the "Filtering" section, by selecting the option to only migrate items newer or older than a specific date, or both
- The date filtering option is not the same as our pre-stage migration option, as it applies to all item types being migrated (pre-stage migration doesn't migrate all item types when it's email) and allows you to migrate new data first (pre-stage migration only has the option of older than)
- Now some practical examples where the date range filtering option will help:
 - Quick switch migrations – configure MigrationWiz to move new data first and backfill the destination after the user has moved
 - Data retention requirements – don't migrate more than you need
- And some examples where the folder filtering option helps:
 - Increase speeds in migrations of large volumes of data by decreasing indexing times
 - Exclude specific folders such as "Deleted items" or migrate just one folder or a subset of folders, by using an inclusive filter

PowerShell SDK

WHAT IS IT AND WHAT ARE THE MAIN BENEFITS

- Our PowerShell SDK includes the BitTitan Command Shell and the BitTitan Management Console
- You can install our SDK by following [this](#) KB
- With the BitTitan Management Console you can, in a menu style console, manage your MigrationWiz projects, but also manage our popular sources and destination systems, like Google, Office 365 and Exchange On Premises
- With the BitTitan Command Shell you can create scripting or manually run commands to automate or execute any task within MSPC or MigrationWiz
- The BitTitan Command Shell is ideal for large migration projects and will save you dozens if not hundreds of hours clicking around in the UI to execute repetitive tasks
- With the BitTitan Command Shell you can also execute very complex tasks that are either not available via the UI or require multiple lengthy steps

PowerShell SDK

EXAMPLES

- Extract personalized DeploymentPro reporting into a CSV to send to your customer
- Apply the User Migration Bundle to a group of 200 users in a customer with 2000, based on a CSV
- Send the DMA email from your own servers with your own "From" address
- Restart all failed migrations in a MigrationWiz project, when the failed reason is "timed out"
- Send migration statistics to an external monitoring system/website
- Automate nonstandard migrations such as Office 365 groups, Google resources or migrations that require multiple per-user recipient mappings
- Automatically move users between MigrationWiz projects, based on their migration status

Next Steps

- Get started for free with a BitTitan account <https://www.bittitan.com/account/register>
- Purchase [Mailbox Migration Licenses](#) or [User Migration Bundle Licenses](#)
- Get started on your next migration project
- Have questions on how to get started? [Contact us!](#)



Thank you!